



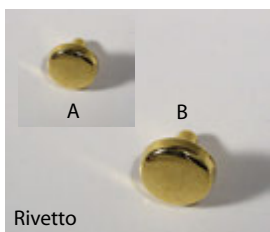
Metal Parts Minuteria

Finiture/Finish:

O = Oro/Gold **N** = Nichel/Nickel **B** = Bronzo/Bronze **OV** = Ottone Vecchio/Old Brass **AV** = Argento Vecchio/Old Silver **OS** = Ottone Satinato/Glazed Brass
NS = Nichel Satinato/Glazed Nickel



Rivetto
MM3546 O - N - OV



Rivetto
A 82141 O - N
B 82142 O - N



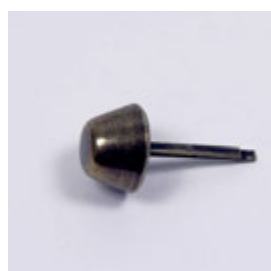
Rivetto
MM9361 AV



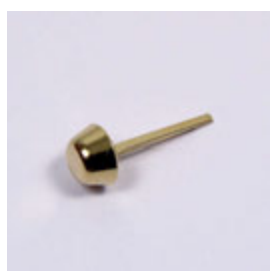
Rivetto
MM9362 AV



Rivetto
MM690F AV



82459 Ø 13 O - N - OV



82438 Ø 9 O - N - OV



22155 13x13 O - N



82516 20x12 O - N



81854 50x25 O



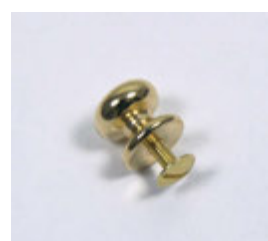
Borchie **KILLER** - con vite
A
V1 BIS O - N
B
V1 mm 13 N
C
V3 mm 25 O - N
D Siluro
8x45 mm 45 N
E Conica
10x28 mm 28 N



Viti sepolte
1TC Ø 9x5 O - N - NS - OV
5TC Ø 9x15 OS



Pomoli con vite
7 Ø 9 O - N - OV
11 Ø 10 O - N - OV
15 Ø 12 O - N - OV



con vite
82178 Ø 12 O



2081 Ø 7 O - N
2732 Ø 10 O - N
2196 Ø 12 O - N



11088/06 O - N - B
11088/10 O - N - B
3289/20 O



938/ 25-30-40 O - N - AV



Ø 5 mm
82885/25-30 O - N - OV - B



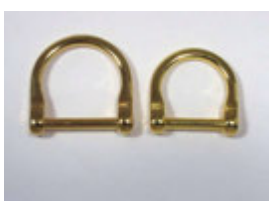
Ø 5 mm
82885/40-50 O - N - OV - B



81781/20-25 O



81776/20 - 25 O



Perno a vite
81876/20 O - N
81877/25 O - N



Perno a vite
440/20-25 O



Perno a vite
285/15 O
285/20 O - N - OV
285/25 O - N - OV

Metal Parts Minuteria



Finiture/Finish:

O = Oro/Gold **N** = Nichel/Nickel **B** = Bronzo/Bronze **OV** = Ottone Vecchio/Old Brass **AV** = Argento Vecchio/Old Silver **OS** = Ottone Satinato/Glazed Brass
NS = Nichel Satinato/Glazed Nickel



81707/10-15-20-25 O-N



888/20-25-30 O - N - OV



13547/28 O



13548/25 O



Anelli

81539/30 Ø5 O - N
81538/40 Ø5 O - N



43/10-12-14-16-18-20-25-30-35-40 O - N - B



Saldato pesante
41/20-25-30-35-40 N



Anelli spessore Ø 5 mm

81/25 - 30 O - N - OV



Occhielli ad incastro

81765/10 O
81843/12 O
81764/15 O



Anelli spirale

637/10-12-15-18-20-22-25-30 O - N



Anelli spirale stampati

655/10-12-16-18-20-22-25 O - N - B



Anelli spirale stam. pesanti

671/31- 33 N



52P/26 O - N



MM215186 B - O - N - OV



81427 O - N - OV



81709 O - N - OV

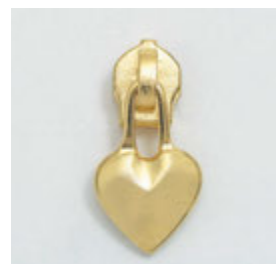


80923 O - N - OV

TIRAZIP Zip puller



81800 N



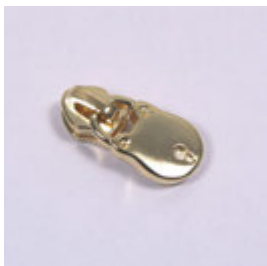
TL16 O

Finiture/Finish:

O = Oro/Gold **N** = Nichel/Nickel **B** = Bronzo/Bronze **OV** = Ottone Vecchio/Old Brass **AV** = Argento Vecchio/Old Silver **OS** = Ottone Satinato/Glazed Brass
NS = Nichel Satinato/Glazed Nickel



82335 O



81944 O



82305 O



82038 O



Tirazip con cursore

82303 O



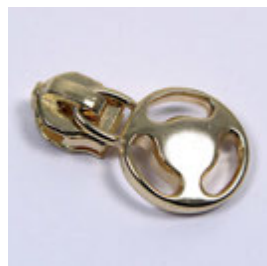
81925 O



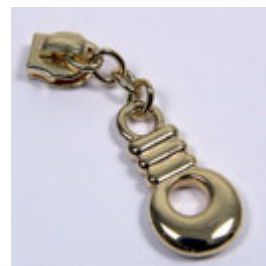
81990 O



TL 17 O



TL 18 O



16205 O

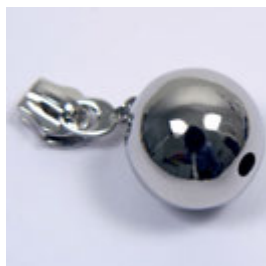
198



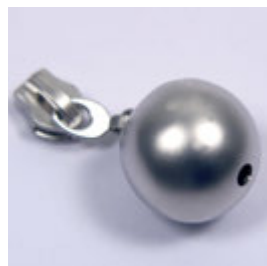
82074 O



81870 O



81824 N



81824 NS



82002 O - OV



81949 NS



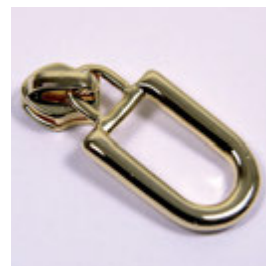
TL 13 O



TL 4 O



82405 O



82036 O

Alamari legno



Tirazip con cursore

82749 N



Tirazip con cursore

82552 N



Tirazip con cursore

82859 N



602 mm 40
603 mm 50

Metal Parts Minuteria



CHIUSURE PLASTICA *Plastic Locks*

Misure INTERNE *Inside measures*

Colori *Colours:*

NE = Nero *Black* BI = Bianco *White* T = Trasparente *Transparent* R = Rosso *Red* BL = Blue G = Giallo *Yellow* V = Verde *Green* C = Celeste *Light Blue*

795/16-20-25-30-40-50 NE - BI	900/50 NE - BI	FLY/40 NE	NYTUCK/G NE	BLOK NE
PICK UP/P NE - BI - R - BL - G - C - V	DOUBLE NE	NYCORD NE	MS/20-25-30-40-50 NE	SC/20-25-30-40-50 NE - T
TR/30 - 40 NE	OS/20-25-30-40-50 NE	SA/20-25-30-40-50 NE	ASN20-25-30-40 NE	GB/28 - 40 NE
110/05 NE	400/1 NE	CP/10 NE	GP/50 NE	TAG NE
OKV/15 NE	AR/27 NE	WL0048 Fissa NE	Y004RA Girevole Y004RB Fissa N N	R 90 NE



Metal Parts Minuteria



Finiture/Finish:

O = Oro/Gold **N** = Nichel/Nickel **B** = Bronzo/Bronze **OV** = Ottone Vecchio/Old Brass **AV** = Argento Vecchio/Old Silver **OS** = Ottone Satinato/Glazed Brass
NS = Nichel Satinato/Glazed Nickel



652/2-3-4-6-8 N-O-OV

813/6-8 O - N - OV

10/20-25-30-35-40
piatto leggero O-N-B-OV

9/20-25-30-35-40
tondo leggero O-N-B-OV

Clips per fiocchi Clips for bows



9368 O

10991 O

10990 O

82394/85 O

CLI1981 Nikel Free



10994 O

81913 O

81910 O

6856 AV

0172 AV - N



6874 AV

7C 98 AV

17187 O - N - B

A) 7812 O
B) 16651 N - O

A) 16671 N - O
B) 7481 N - O

Metal Parts Minuteria



Finiture/Finish:

O = Oro/Gold **N** = Nichel/Nickel **B** = Bronzo/Bronze **OV** = Ottone Vecchio/Old Brass **AV** = Argento Vecchio/Old Silver **OS** = Ottone Satinato/Glazed Brass
NS = Nichel Satinato/Glazed Nickel

<p>con perno</p> <p>Ottone</p> <p>978/19 - 26 N</p>	<p>Ottone</p> <p>A) 735/22 -31 N B) 736/22 -31 N</p>	<p>Ottone</p> <p>231/15-19-20-21-25-29-32 38,5 O - N</p>	<p>25/20-25-30-35-40-50 O - N - B - OV</p>	<p>39/12-14-16-18-20-25-30- 35-40 O - N - OV - B</p>
<p>Ottone</p> <p>975/17 O - N</p>	<p>Ottone</p> <p>9/25 OS 10/30 OS</p>	<p>Pesanti</p> <p>1/20-26-30-36-40-50-60- 70-80 N - NE</p>	<p>Ottone</p> <p>737/20-22-27 N - O</p>	<p>Ottone</p> <p>974/18-21 N</p>
<p>Ottone</p> <p>95 Passastrik a rampino N</p>	<p>Ottone</p> <p>92 Passaredine N</p>	<p>Ottone</p> <p>12/30-35 N</p>	<p>Saldati</p> <p>37/10-16-18-21-25-30-40 N - O</p> <p>36/30 Ø5 - 40 Ø6 N</p>	<p>638/4...25 O - N - B</p>
<p>Ottone Ottone</p> <p>A) 869/65x13 N B) 683/65x10-68x12 N</p>	<p>Gancio Pompieri</p> <p>12644 L 60 mm N 12645 L 85 mm N 12646 L 100 mm N</p>	<p>Zincato</p> <p>762/27-40 N</p>	<p>Zincato</p> <p>951/26 N</p>	<p>82609 N - NS - OV</p>
<p>80573 30x30 25x25 O</p>	<p>A) 81666 20x20 O B) 81667 20x20 O C) 81845 28x28 O</p>	<p>80718 30x30 O</p>	<p>A) 80802 15x15 O B) 81113 15x15 O</p>	<p>A) 80730 15x15 O B) 81438 15x15 O</p>